

A fisherman is standing in a small boat on a narrow waterway, surrounded by lush green wetlands. The boat is heavily laden with large, rectangular fishing nets. The fisherman is holding a long wooden pole. The background shows a vast expanse of green grass and some trees under a clear sky.

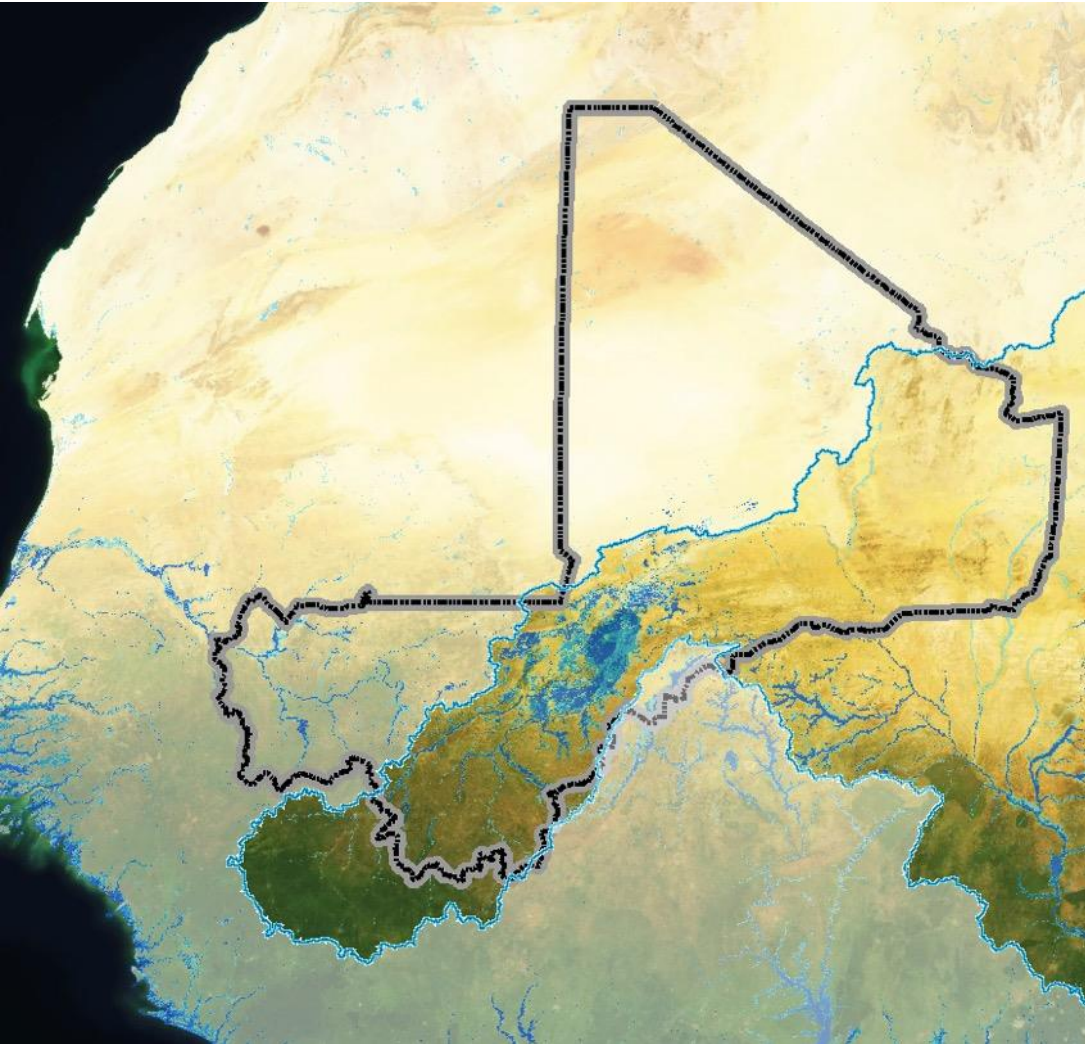
# Sustainable development of fisheries in the Inner Niger Delta: Challenges & Opportunities

Dr Karounga KEITA, Director Sahel Wetlands International

[kkeita@wetlands-africa.org](mailto:kkeita@wetlands-africa.org)



# Located in the Sahel, the Inner Niger Delta is the biggest wetlands in West Africa



Seasonal inundation in the Inner Niger Delta, Mali

Central  
Lakes



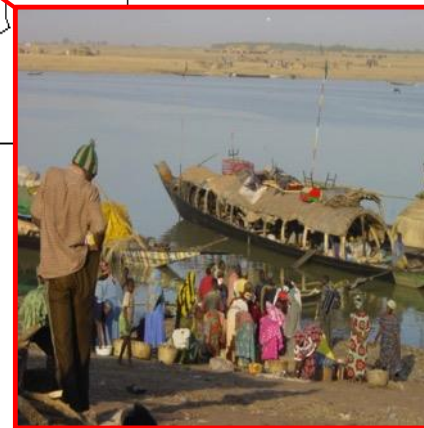
Delta  
Output



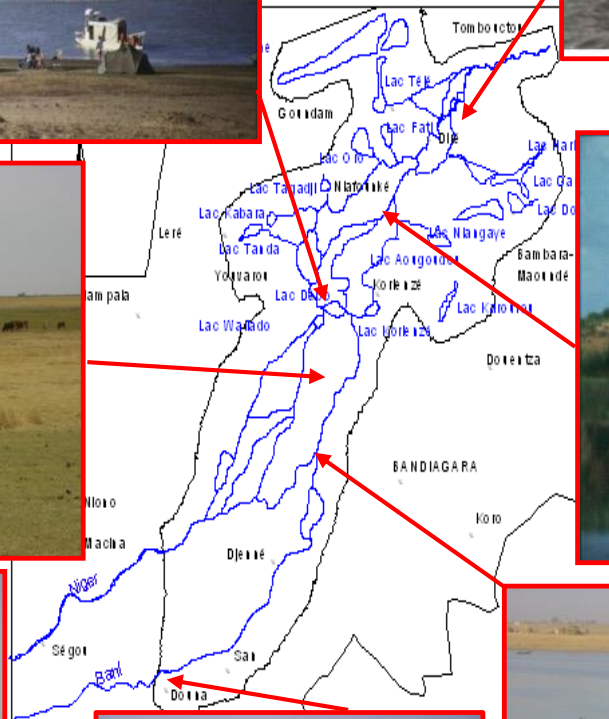
Northern  
Delta



Mopti



« The Venice of Mali »



Delta Input 2



Southern  
Delta



Delta  
Input 1



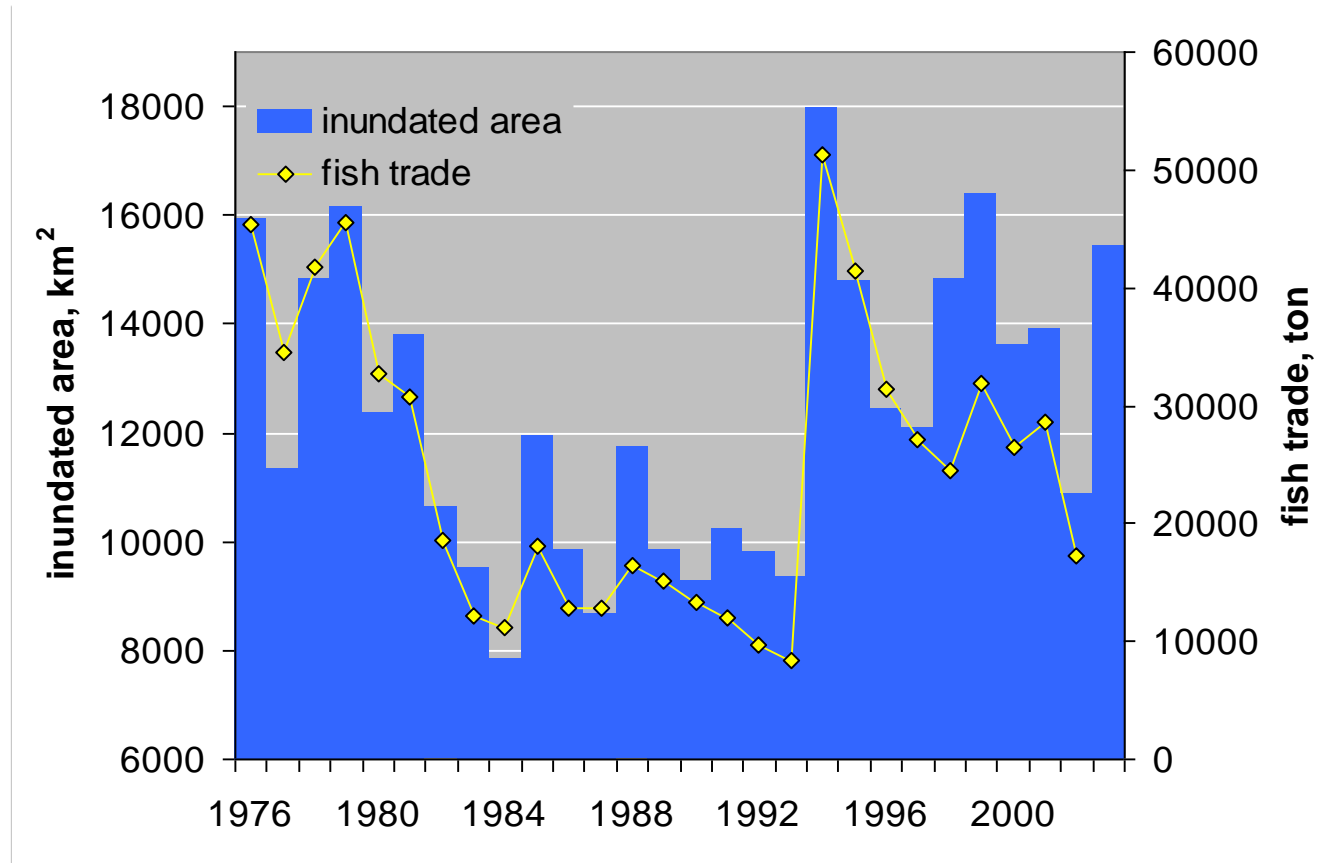


**35% of rural people in the Inner Niger Delta depend for their living on fisheries.**

**The Inner Niger Delta supports the livelihood of some 2 million people directly and indirectly (rice farming, fishing and cattle breeding).**

# The Niger: flood based economy

The Inner Niger Delta, high vulnerability: more than 41.000 km<sup>2</sup> flooded area in good years but less than 10.000 km<sup>2</sup> in bad years





**FISH PRODUCTION WAS CONTRIBUTING  
FOR 10% OF MALI GDP OF WHICH 80%  
WAS COMING FROM THE DELTA  
FROM 1970 TO 2000**

Now, fish production contributes 4% of the GDP with less than 40% produced in the Inner Niger Delta. Decreased fish spawning area driven by reduced flood extent, bad fishing practices and insecurity.



A group of men are gathered in a room. One man in the foreground is wearing a yellow shirt and a white headscarf. Another man is sitting on a blue motorcycle. The room has a patterned rug and a pink curtain. The text 'FISHING PRACTISED MAINLY BY 2 ETHNICAL GROUPS AS ANCESTRAL ACTIVITY: BOZO AND SOMONO' is overlaid in white.

**FISHING PRACTISED MAINLY BY 2 ETHNICAL GROUPS AS ANCESTRAL ACTIVITY: BOZO AND SOMONO**



# Around 300 000 fishermen are in the Inner Niger Delta: 65% migrants and 35% residents



# Challenges facing the fisheries in the Inner Niger Delta

LIMITED ACCESS TO FISHERIES  
WORSENERD BY BOTH FLOOD DECREASE  
AND POPULATION GROWTH





# TRADITION AGAINST INNOVATION

A group of six men stands in a dry, cracked landscape, illustrating the impact of climate change on production. The men are dressed in traditional attire, including turbans and long robes. The ground is parched and cracked, with sparse, dry vegetation in the background. The text "CLIMATE CHANGE IMPACTS ON PRODUCTION" is overlaid in large, white, bold letters across the center of the image.

# CLIMATE CHANGE IMPACTS ON PRODUCTION

# LIMITED ACCESS TO CREDITS

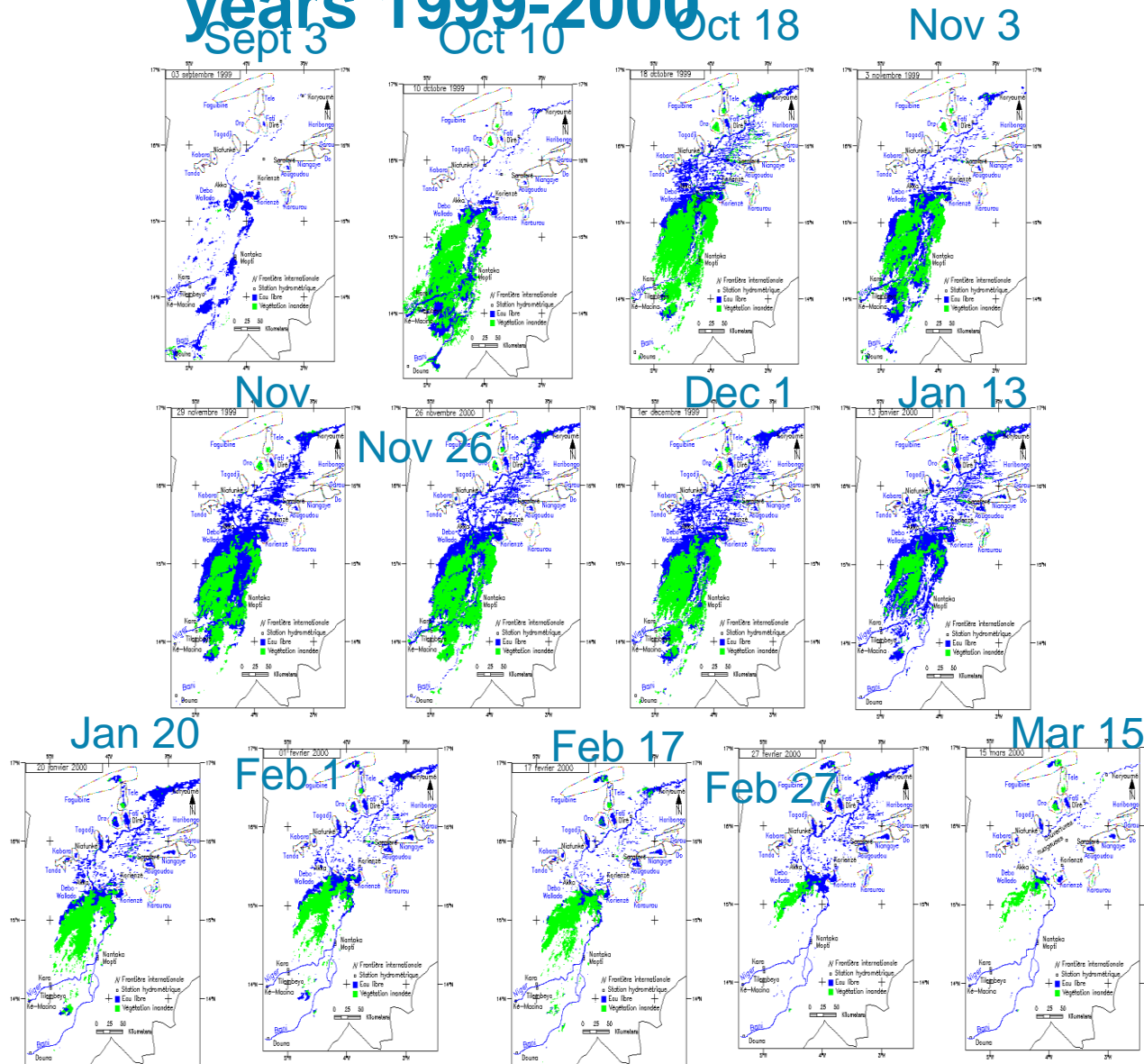




# SOCIAL UNRESTS AND INSECURITY

# Flood annual dynamic

## years 1999-2000



# Infernal spiral since 1976

Bad fishing practices

Mesh size of  
the nets  
decreased  
(5 → 1-3 cm)

Decrease in  
size of  
captured fish



# Opportunities for sustainable fishing

Training of Fishermen in  
new practices:  
aquaculture...



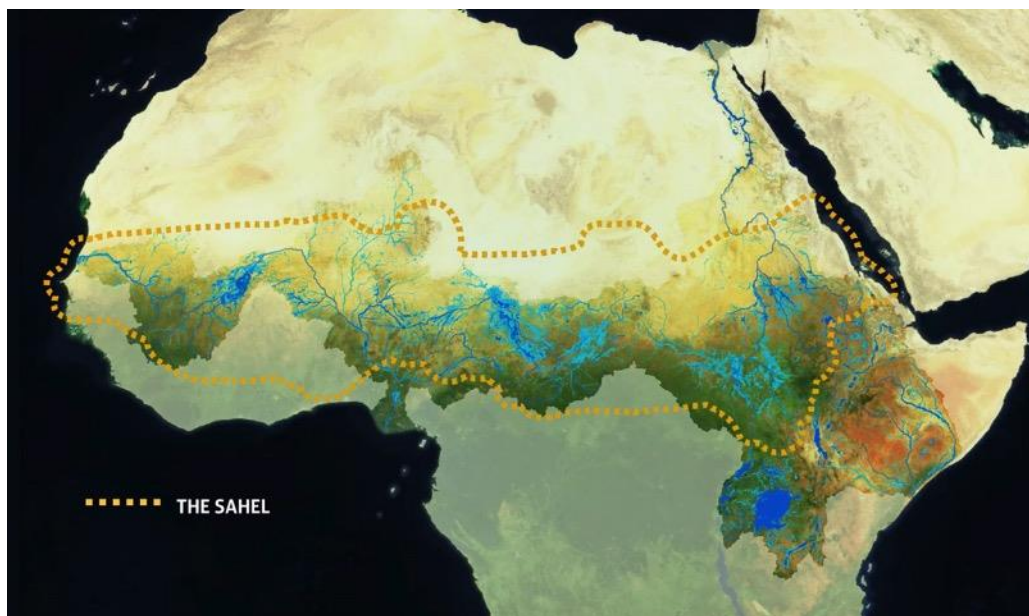
# Opportunities for sustainable fishing

Microcredit  
development through  
fishermen unions and  
coalitions guaranty

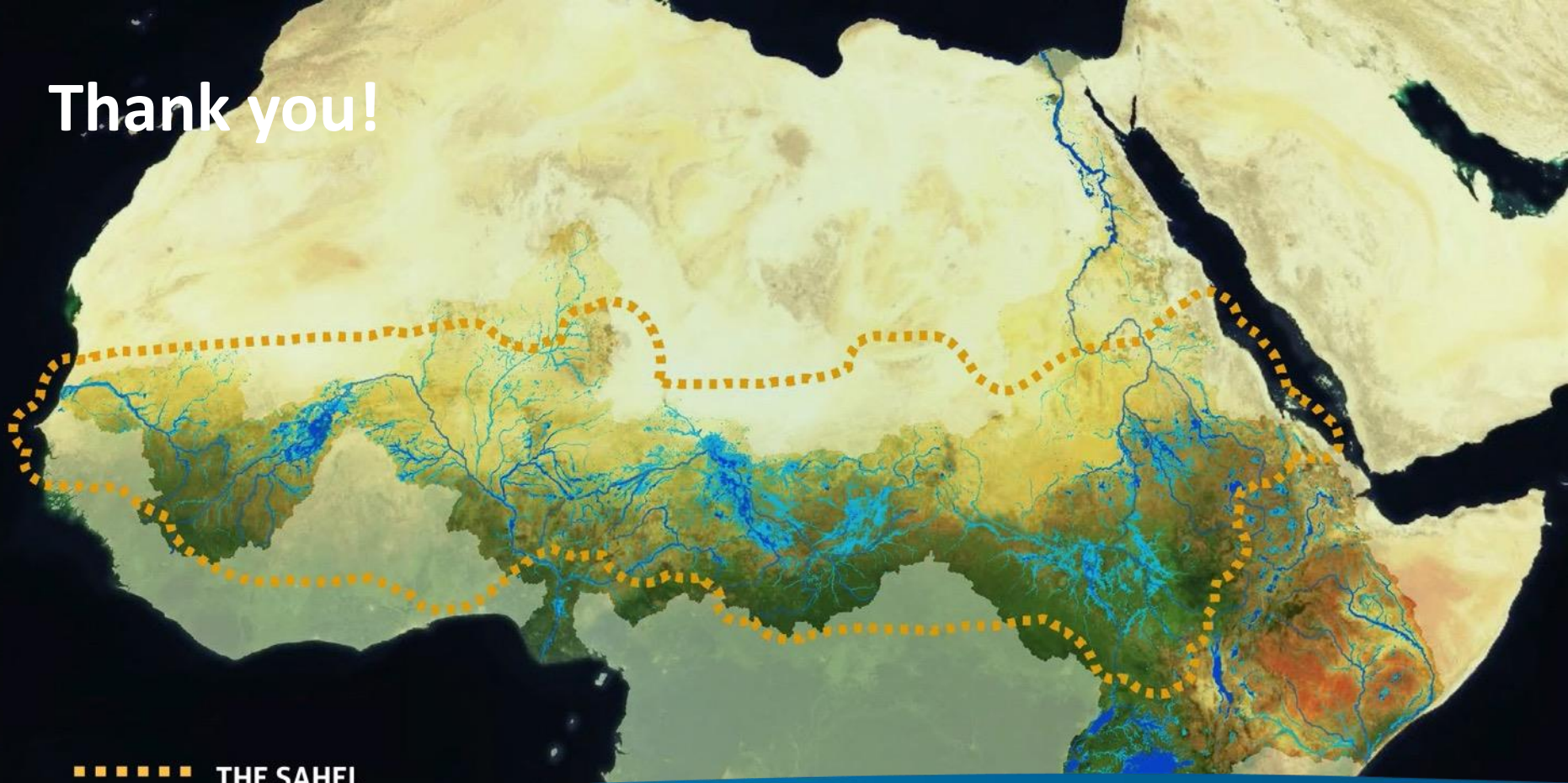


# Opportunities for sustainable fishing

Implementation of fisheries convention to avoid overfishing



Thank you!



■ ■ ■ ■ ■ THE SAHEL

[www.wetlands.org/watershocks](http://www.wetlands.org/watershocks)